



the TRAVELER



Volume 22-3

March 2025

P.O. Box 812, Cantonment, FL 32533



Tech Talk and Pensacola Vintage Cars Open House

After the February 1st club breakfast, members met at Pensacola Vintage Cars' shop. We had 14 members attending to see what PVC could offer the club in Parts and Services.

We were able to tour around and see the parts shelves and service equipment on hand.

With the ability to rebuild/restore used parts with the media blaster, to the ultimate cleaning from the sonic cleaner, the building table and finish up with a performance check on a testing engine.

This great facility will also be used, hopefully quarterly,

for the club's Tech Talks. Everyone's always welcome to stop by Monday through Thursday, 8am-1pm. Looking forward to future events in this location.

See more photos on page 3



Our Club



GCMAC Officers	Name	Phone	Email
President	Allen Braddy	678-499-3370	alnbraddy@yahoo.com
Vice President	Martha Fuller	251-602-1931	waltermern@aol.com
Secretary	Kathy McNamara	251-421-6012	mrhobbs456@aol.com
Treasurer	Becky Baisden	850-384-5717	beckyb0814@att.net
Newsletter Editor	Charlotte Dahlenburg	256-783-2261	realracegril1@gmail.com
National Rep	Allen Braddy	678-499-3370	alnbraddy@yahoo.com
Webmaster	Becky Baisden	850-384-5717	beckyb0814@att.net
Event Coordinator	Allen Braddy	678-499-3370	alnbraddy@yahoo.com



March Birthdays

15 Larry Nelson
 21 Gator Gould
 25 Jane Frazier

- Not Listed?**
- Send me your birthday.
 - I don't need the year
 - you were born after all we all are 28-31!
 - Also, send me your anniversary date.
 - realracegril1@gmail.com

Message from ...

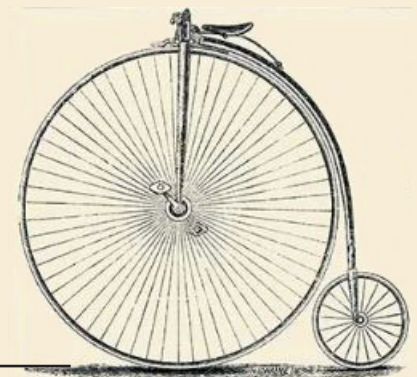
Hello all,

I hope everyone is doing well.

We're entering a very busy season with touring, swap meets, parades, and focusing on finalizing the 2025 National Awards Banquet in Mobile. We will have a lot to discuss at the Business Meeting March 15 at the Baldwin Heritage Museum. We've got changes to the club by-laws to discuss and finalize, needing volunteers for club events, and suggestions for future events.

Looking forward to see everyone's smiling faces.

Allen





Tech Talk and Pensacola Vintage Cars Open House



THE TRAVELER

Monthly publication of the Gulf Coast Model 'A' Club - Southern Alabama to the Florida Panhandle



Club Happenings



February Club breakfast was held at the Golden Corral in Pensacola with 13 in attendance and one guest.



2025 Club Dues

Club dues are \$25 per year for individuals or families.

We encourage membership in the Model A Ford Club of America (MAFCA), a national organization that promotes the restoration of the Model A and publishes a great magazine, The Restorer, six times a year.

Send a check to: GCMAC, P. O. Box 812, Cantonment, FL 32533



I've just gotten my '31 coupe from WV. I'm changing fluids, fixing stuff I can fix and replacing stuff in need of replacement. It's a project I probably won't have ready to show or drive this year but I'm learning a lot and doing what I can. - Carl Whaley



Entertainment

Email to
Joe Allen Braddy
alnbraddy
@yahoo.com

Submission
date is the
20th of each
month

Car Shows, Events, Cruise Ins & More

Model A Facebook:

Private, by invitation only, Facebook group, "Todays Model A." This is for members-only group. Interested in joining the group, contact Scott.

Club Activities:

Monthly

Club Breakfast in Pensacola March 1 8:30 am

Golden Corral 2260 Langley Ave, Pensacola

March

15 11am

GCMAC Quarterly Meeting

Baldwin County Heritage Museum, 25521 US-98 Elberta

June

14 11am-2pm

GCMAC Picnic and Meeting

Garrett Park, 18080 Pennsylvania St, Robertsdale

28 8am-3pm

GCMAC Swap Meet

2206 La Vista Ave, Pensacola, FL

September

20 11am

GCMAC Quarterly Meeting

Baldwin County Heritage Museum, 25521 US-98 Elberta

December

3-6 National Awards

Banquet Hosted by GCMAC

in Mobile. Must Preregister for events and be a member of MAFCA to participate.

MAFCA Activities:

March

1 7am-2pm

Winter Swap Meet – Marietta, Ohio

43rd Annual Almost Spring Swap Meet & Car Show –

Puyallup, Washington

23 7:30 am - 11:30 am

The Minuteman Model A

Ford Club 29th Annual

Winter Blah's Swap Meet – Maynard, Massachusetts

April

3-5

CCRG 2025 Jamboree –

Visalia, California

11-12

19th Annual All Model

A Parts Swap Meet –

Greenwood, South Carolina

26 9:30am-2pm

Annual Model A Ford Dust

Off – Sanbornville, New Hampshire

Quiz Time!

Read the newsletter to find the answers to the following questions.

1. How many members attended the February Tech Talk?

A. 11, B. 12, C. 13, D. 14

1. How much are our dues?

A. \$25, B. \$105, C. \$50, D. \$35

1. On what page do you learn about taking measurements?

A. 11, B. 2, C. 7, D. 14

1 D, 2 A, 3 C.

Regional Activities:

March

1 8am-2pm

9th Collard Green Festival

Car Show, Evergreen Regional Airport, 14134 Hwy 84, Evergreen, AL.

1 11am - 1pm 2nd Annual

Charity Car Show 2499

South Ferdon Blvd

Crestview, FL

5 10am-??

Azalea Trace Display –

10100 Hillview Dr,

Pensacola, FL

15-16

7 8am - ???

Westgate Mardi Gras Parade

10050 Ashton Brosnaham Dr

Pensacola, FL

8 8am-3pm

Swamp Fest Car Show,

1 Gator Circle,

Satsuma, AL.

15 9am-3pm.

William F Green Veterans

Home Car Show,

300 Faulkner Dr.,

Bay Minette, AL.

29 8am-3pm

St Patrick 2nd Annual Wild

Irish Fest and Car & Truck

Show, ST Patrick School

23070 Hwy 59 N,

Robertsdale, AL

29 8am-3pm.

15th Shirley Looney

Memorial Car Show,

4901 Zeigler Blvd., Mobile, AL.



Email
Submissions to
realracegrill1
@gmail.com

Classifieds

Submission
date is the
20th of each
month



1931 Ford Model A pickup truck for sale, \$21,000. contact Larry Nelson 251 323 8050 new tires, stone guard, new battery pictures on request. other item for sale, front axle, rear axle, frame, starters and generators, and other items



ABOUT THE GULF COAST MODEL 'A' CLUB

The Traveler newsletter is published for the membership and friends of the Gulf Coast Model 'A' Club. Outings are held monthly at various locations and times. Views expressed in the Traveler are not necessarily those of the Club Officers or MAFCA. Club membership is \$25.00 per year and can be mailed to Becky Baisden at:

GCMAC,
PO Box 812
Cantonment, FL 32533
Club dues are \$25 per year for individuals or families. We currently have a membership of 40+ families. We believe in doing maintenance on the cars, educating ourselves on the Model 'A', fellowship with other members, showing the cars, driving the cars locally and

on tours and having a great time seeing and driving Model 'A' Fords. We have fun and would welcome you as a member whether you own a Model A or not. Come join with us in a wonderful hobby that is historical and worthwhile. You will meet friendly people who are in love with the Model 'A' and love to drive, show and talk about these interesting cars.





Era Fashions



Taking Your Measurements

By Lois Przywitowski, Model A Ford Club of Colorado Chief Fashion Judge, Reno 2018

The warm, gentle breezes of summer are almost here. Soon, Model A's and their devoted owners will gather together at the National Convention in Sparks-Reno, various regional meets and local club activities. Events like these offer the perfect opportunity to dress as though we belong in the Model A era. But how does one achieve that look?

Start by getting your measurements. Your measurements are useful in selecting and sizing your pattern, sewing your garment, and measuring garments before trying them on. Some of the meets offer a Fashion Boutique where you can purchase era or era image clothing. Before you try on an era garment, measure the shoulder, bust, waist and hip areas of the garment. Doing so will not only save you the frustration of trying on a garment that is too big or too small, it can save the garment itself.

If you are looking for an era pattern, check out the Pattern Project, found at the MAFCA website under Fashions. There you will find a large assortment

of patterns available for purchase. You will also find a great article entitled The Sizing of Model A Patterns written by Peggy Gill, the current Era Fashion Committee Chairperson, that will help you choose your pattern size. It really is a "must read" before you get started.

The following measuring instructions for women, men, and children are from The Art of Dressmaking, published by Butterick in 1927. The lovely thing about taking your measurements is that the method of doing so doesn't

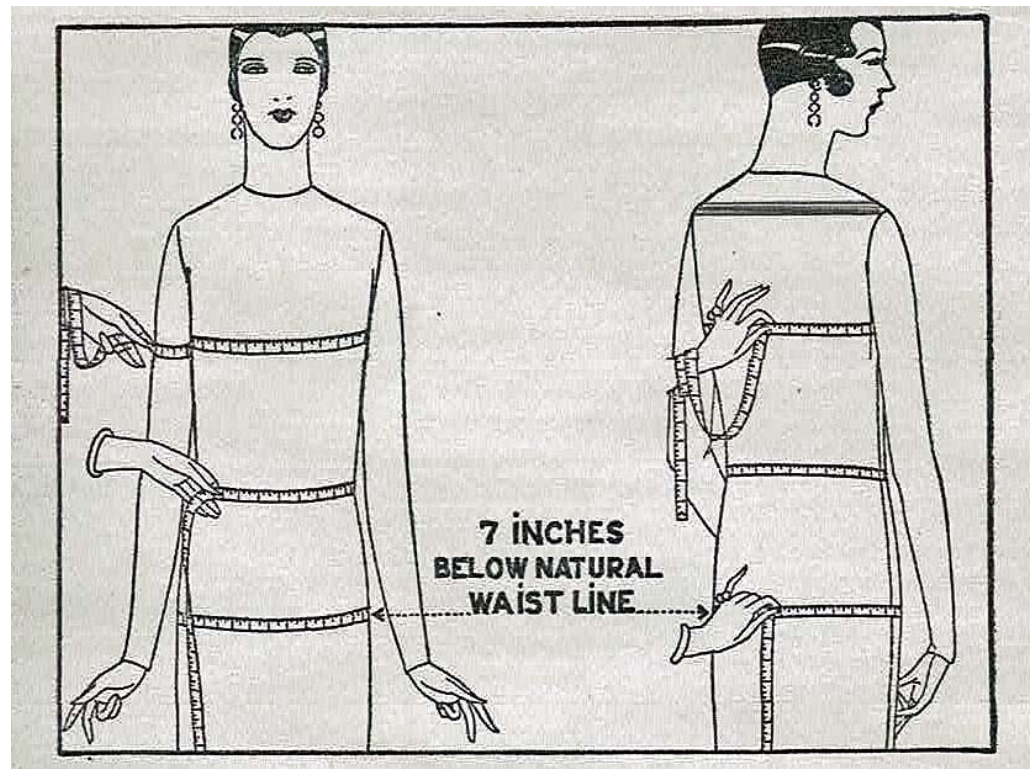
change with the year.

WOMEN AND GIRLS

BUST - The bust measurement should be taken from the back. Measure over the fullest part of the bust, close up under the arms and straight across the back. If the tape is held too high at the back, the measure will be too large; if too low, it will be too small.

BACK - Measure across the back, about 2" below the neckline.

WAIST - Take the waist measurement at the natural waistline.



HIP - The hip measurement should be taken from the back. Measure about seven inches below the natural waistline.

ARM - Take the arm measurement around the largest part of your arm, about one inch below the armhole. For arm length, measure from top of your arm to your wrist, with your arm slightly bent.

NOTE - In taking the bust, waist, hip and arm circumference measurements, the tape should be close, but not tight.

MEN AND BOYS

CHEST - Take the chest measurement around the body close under the arms.

WAIST - Take the waist

measurement at the natural waistline.

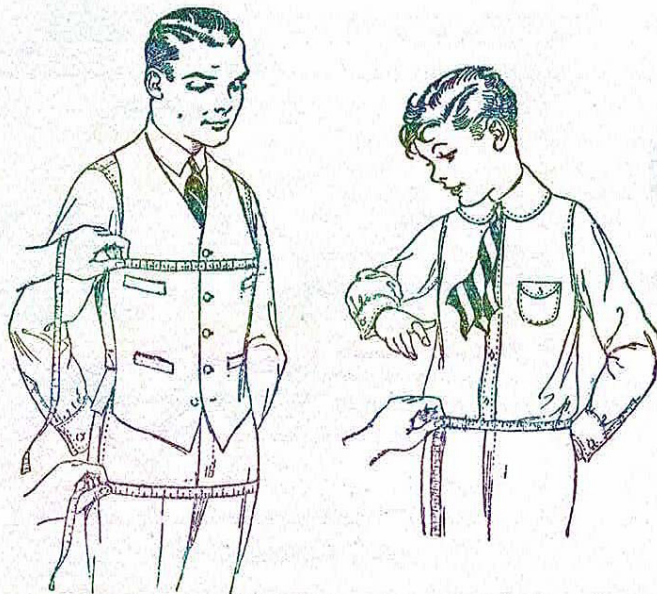
HIP - Take the hip measurement around the fullest part of the hip. The tape should be easy, not snug.

NOTE - For both the chest and waist measurements, the tape should be snug, but not tight.

At least once this summer, have fun dressing up, just like you did when you were a kid! Wouldn't it be grand to see everyone dressed in era style at a

Grand Tour?

Wishing you all a safe, wonderful and amazing touring season!



The Model A Ford Club of America MAFCA

Serving Model A Ford owners since 1955



Our award winning magazine "The Restorer"

MAFCA is dedicated to the restoration, preservation and enjoyment of the Ford Model A and AA cars and trucks, as manufactured from 1928 through 1931. We are an active, family-friendly organization whose members share a passion for these historic vehicles, plus other aspects of life in that era, such as fashions.

MAFCA is a not-for-profit corporation with members and local affiliated chapters all over the globe. This makes us the largest car club in the world dedicated to one make of automobile. We hope you enjoy looking through our site, and we invite you to join us!

Membership in Model A Ford Club of America is encouraged. MAFCA Dues are \$50.00 and should be mailed to: MAFCA Headquarters, 250 South Cypress, LaHabra, CA 90631-5586 For more info visit: <https://www.mafca.com/>



Tech Tips

The Oil Pump

By Tom Endy,
Westminster, CA

The Model A Ford oil pump is a fairly simple device, its sole purpose is to capture oil from the oil supply in the engine pan and raise it up to the valve chamber where it collects and runs down through ports to the crank shaft main bearings. The balance of oil then pours through an opening in the front of the valve chamber and dumps onto the timing gear, and then returns to the pan. There is very little actual oil pressure as is found in modern cars.

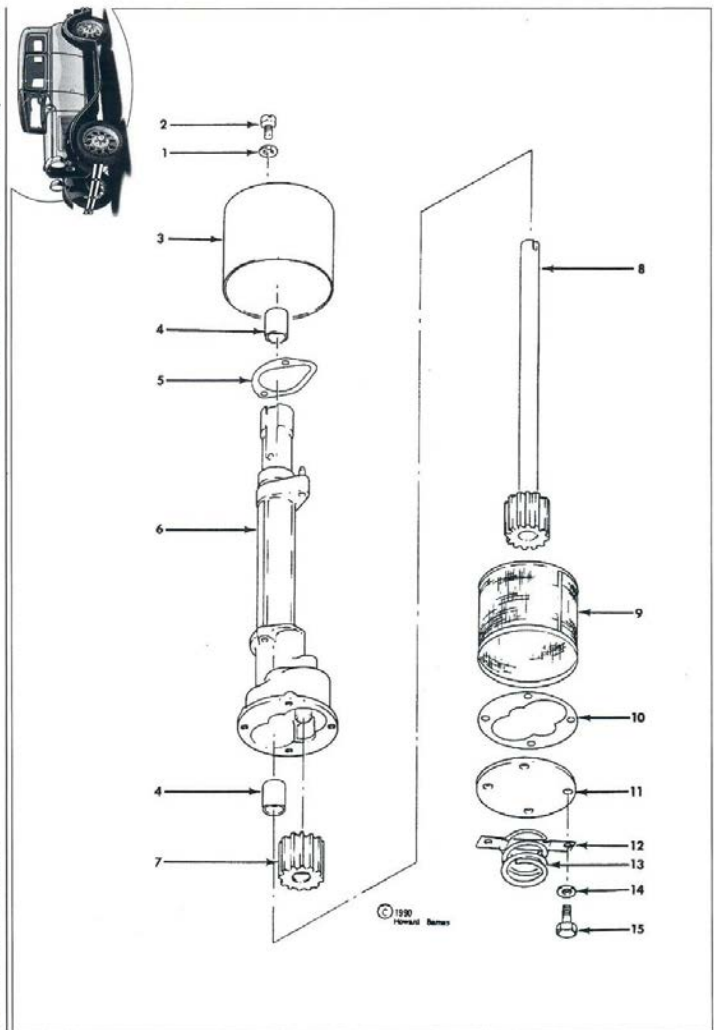
About all that needs to be done during an overhaul of the pump is to replace the two bushings and the two gaskets. The screen should also be either cleaned or replaced. Most everything else usually does not need to be replaced, although all the parts are available from most of the suppliers.

However, Henry laid a trap for you. There is an early and a late version of the pump. The only difference is the internal bore of the pump housing. The early pump (1928 through November 1929) uses bushings with an outside diameter of .656. The later pump (November 1929 until the end of production) uses bushings with an outside diameter of .625. The

inside diameter of both bushing sizes are all the same, one half inch (.500). So, you must pay attention to which size bushing you need to order for an overhaul. Both sizes are available from most suppliers.

It is not clear why there were two sizes of pump housing. There is speculation that Henry did it to confuse and confound the next hundred years of Model A enthusiasts.

OIL PUMP ASSEMBLY, 1928-1931 (P/N A-6600)



Model A Ford

<u>Index No.</u>	<u>Part No.</u>	<u>Nomenclature</u>	<u>No. Req.</u>
1	34805-S	Lockwasher (1/4)	2
2	31606-S	Fillister Screw (1/4 - 28 x 7/16)	2
3	A-6611	Cover-Oil Pump Screen	1
4	A-6612-B	Bushing (.625 OD/.500 ID)	2
5	A-6626	Gasket, Cover Screen	1
6	A-6603-C	Body Assembly	1
7	A-6610	Gear	1
8	A-6608-B	Shaft Assembly	1
9	A-6623-B	Screen, Filter	1
10	A-6619-R	Gasket, Oil Pump Cover	1
11	A-6616	Plate, Oil Pump Gear Cover	1
12	A-6618	Clamp, Retaining Spring	1
13	A-6620	Spring, Retaining	1
14	34805-S	Lockwasher (1/4)	4
15	20309	Bolt (1/4 - 28 x 1/2 Hex)	4



Era Photos



Members of Congress Welcome President Back to Washington

4-13-34 Washington D.C. Photo shows President Roosevelt speaking to a large gathering of members of both houses of Congress who marched to the Station in a body to welcome him back to Washington after a brief vacation in Florida.



– Photographer Bill ShROUT



President Roosevelt Signs Gold Bill

1-39-34 Washington D.C. President Roosevelt today signed the dollar devaluation bill and will take immediate steps to put the new monetary system into effect. Photo shows the President signing the bill in the presence of his monetary advisors. Left to right: Herman Cliphant; of the Treasury Department; Secretary of the Treasury, Morgenthau; Eugene Black, Governor of the Federal Reserve Board; Professor George Warren; George L. Harrison, Governor of the Federal Reserve Board of New York and Professor James Rogers.



Chocolate Chip Cookie Inventor: Ruth

Reprinted with permission from Kate Kelly see more stories at <https://americacomesalive.com/chocolate-chip-cookie-inventor-ruth-wakefield/>

By Kate Kelly

the Massachusetts inn she and her husband operated.

About Ruth Wakefield



Ruth Wakefield

Ruth Graves was born in 1903 and grew up in Easton, Massachusetts. She continued her education at Framingham State Normal School of Household Arts. After graduation in 1924, she taught home economics at a high school in Brockton, Massachusetts, and also worked as a hospital dietitian.

Ruth married Kenneth Wakefield (1897-1997), a meatpacking executive, in 1926. Four years later they bought an old house in Whitman, Massachusetts. The house was built in 1817 as a personal home, but it was



The chocolate chip cookie (toll house cookie) was first invented by Ruth Graves Wakefield (1903-1977). She was a trained dietitian who ran the kitchen of

located on what would have been the toll road between New Bedford and Boston. With this historic location, the Wakefields planned to open it as a small inn, calling it the Toll House Inn.

The Toll House Inn



With her background in household arts, Ruth was well-prepared to put together a menu for the inn. Many of the dishes she prepared were based on colonial recipes as well as many from her grandmother. Over time, Ruth's reputation grew, and the Toll House Inn became well-known for her cooking, particularly her desserts.

The restaurant started with only seven tables, but soon they were serving 60 tables at most mealtimes.

As early as 1931, Ruth Wakefield found there was a demand for her recipes, and the couple published a cookbook that year, Ruth Wakefield's Tried and True Recipes.

Invention of the Toll House Cookie

In 1938, Ruth Wakefield with her cooking assistant Sue Brides, was experimenting with

pecan drop cookie dough. The basic cookie recipe involved half white sugar and half brown sugar, and people loved it, but Ruth felt there could be interesting variations. She planned to melt baker's chocolate and add it to the dough.

When she discovered she was out of baker's chocolate, she looked around her pantry and found semi-sweet chocolate bars given to her by Andrew Nestlé. (The Nestlé Company's first product was condensed milk but by 1930, they branched out into different forms of chocolate.) She chopped the bar into small bits and sprinkled them into the blond dough.

When the cookies were baked, she discovered the chocolate had not melted or been absorbed, and diners loved them. She named the cookies, Toll House Chocolate Crunch Cookies.

Word Spreads



As customers began to request the cookies, word spread. The Toll House Inn featured the cookie recipe in some of their ads, and in the late 1930s, when a new edition of the cookbook was published, the recipe was included.

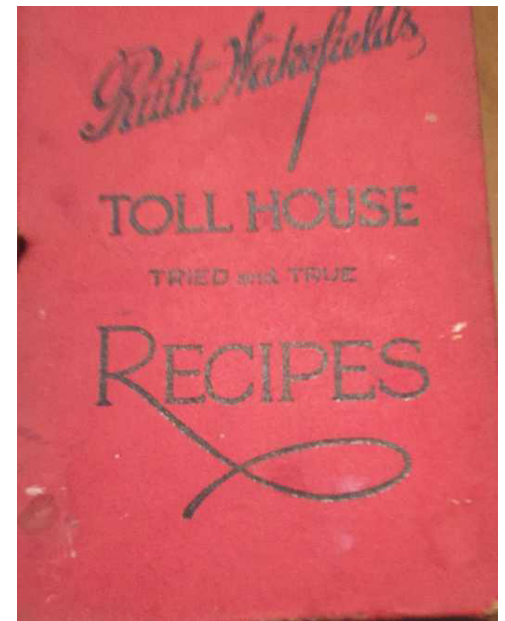
In addition, General Mills

employed a woman named Marjorie Husted, who was publicized as Betty Crocker. Husted/Crocker had a popular radioprogram where Wakefield's cookies were featured.

As Nestlé's sales went up, the company began coming up with product changes to encourage more sales. The first effort was to pre-score the bars to make it easier for home cooks to use the ingredient.

But it wasn't long before Nestlé began packaging the chocolate in chip form. Chips became the norm.

Nestlé and Toll House



Stories differ as to whether Wakefield approached Nestlé or whether they approached her, but one way or another, Wakefield and Nestlé entered a partnership. Nestlé gained permission to print Wakefield's recipe on the back of their packaging. In return, it was said that Wakefield received a \$1 payment for rights to the recipe, all the chocolate she



The original Toll House Inn burned down in 1984. There is now a marker noting its location.

would need for a lifetime of baking, and a consulting deal to work with Nestlé on other recipes. (Perhaps more money changed hands later.)

Toll House Cookies and World War II

The original Toll House Inn burned down in 1984. There is now a marker noting its location.

Sue Brides's daughter remembers that in the 1940s, the interest in the cookies had just become huge. As Massachusetts soldiers

received cookie care packages from home, the Toll House Inn began receiving letters from all over the country.

Peg Brides worked in the kitchen with her mom, helping to pack boxes of cookies for overseas. (To read about the difficulty of sending packages overseas during World War II, read about the 6888 Central Postal Battalion.)

Search the Internet for the Nestle Toll House cookie recipe. (According to Peg Brides, the original recipe used Crisco.)

Check out the New MAFCA website!



Contact ▾ Join/Renew Store Members Only ▾



Committed To The Restoration, Preservation, and Enjoyment of the Ford Model A

Home ▾ Chapters ▾ Classifieds Calendar Committees ▾ Publications ▾ News ▾ Videos "A" Of The Day ▾ 🔍

Welcome to MAFCA!

The Model A Ford Club of America, Inc. (MAFCA) is committed to the restoration, preservation, and enjoyment of Ford Model A and AA cars and trucks, produced between 1928 and 1931. We are an active, family-oriented organization with members who share a deep enthusiasm for these historic vehicles.

As a non-profit corporation, MAFCA boasts over 10,000 members and has over 250 local chapters worldwide.

[JOIN OR RENEW TODAY!](#)



www.gulfcoastmodelclub.net

Join Us In the 21st Century

Gulf Coast Model A Club



THE TRAVELER

Monthly publication of the Gulf Coast Model 'A' Club - Southern Alabama to the Florida Panhandle





Gulf Coast Model A Club
**SWAP
 MEET**

Saturday June 28 8:00 am - 3:00 pm

Join fellow enthusiasts to buy sell & trade at the home of
Model A Ford Vintage Parts
 2206 La Vista Ave Pensacola FL 32504

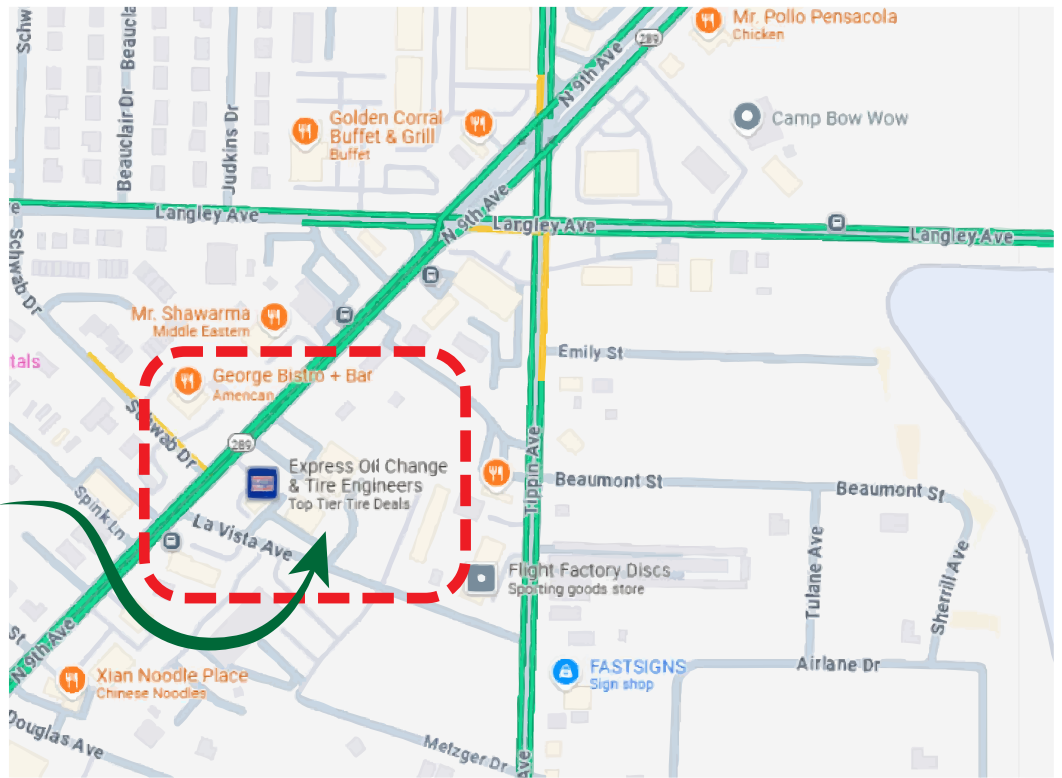
For more information contact:

Ricky Stokes
 850-712-4486
 crstokes21@gmail.com

Allen Braddy
 678-499-3370
 alnbraddy@yahoo.com

Event Site
Model A Ford Vintage Parts
 2206 La Vista Ave
 Pensacola FL 32504

Concessions Available:
 Hot dogs
 Hamburger
 Chips & Cold drinks



Vendor Registration \$25

Due by 04/30/2025 * Make checks payable to Gulf Coast Model A Club
 Email to alnbraddy@yahoo.com or mail to 2206 La Vista Ave Pensacola FL 32504

Name _____

Address _____

Phone _____

Email _____

Signature _____