



the TRAVELER



Volume 21-9

September 2024

P.O. Box 812, Cantonment, FL 32533

July Meeting at Magnolia Blossom



Allen Braddy opened the meeting and thanked all in attendance.

A Short discussion about holding a monthly meeting at Magnolia Blossom Cafe on the

3rd Thursday of the month except for December. There
Continued on Page 3



Our Club



GCMAC Officers	Name	Phone	Email
President	Allen Braddy	678-499-3370	alnbraddy@yahoo.com
Vice President	Martha Fuller	251-602-1931	waltermern@aol.com
Secretary	Elizabeth Witherington	251-648-9844	mrs.witherington@att.net
Treasurer	Becky Baisden	850-384-5717	beckyb0814@att.net
Newsletter Editor	Charlotte Dahlenburg	256-783-2261	realracegril1@gmail.com
National Rep	Allen Braddy	678-499-3370	alnbraddy@yahoo.com
Webmaster	Becky Baisden	850-384-5717	beckyb0814@att.net
Event Coordinator	Allen Braddy	678-499-3370	alnbraddy@yahoo.com

September Birthdays

4 Shawna Thompson



Anniversaries

Bill & Jan Collins

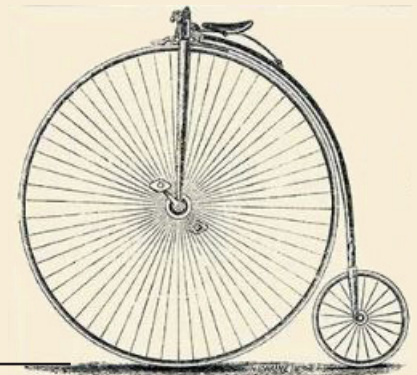


Message from ...

Being part of a club offers you access to a vast range of knowledge and expertise that you may not have had otherwise. Imagine all the cool events you could attend. Camaraderie allows you to be a part of a community that shares your love for cars. You get to meet and connect with others that appreciate your passion and build lasting friendships and a strong support network.

As we move forward, I hope you find yourself wanting to help grow our club by getting involved. We are always looking for members to step up and take an active part to make this club better. Further in this newsletter, you'll find opportunities to help the club organize and prepare for our future.

Allen Braddy



Continued from Page 1

was a concern that November might be a problem but a quick look at a calendar and it was noted that for the next three years it was not a problem. The Heritage Museum was mentioned as a backup location.

Allen announced to the club that our club will be hosting the National Awards Banquet in 2025. He explained that the National board will help and support the club. He also mentioned that the early stages of negotiations have begun. The city of Mobile is sending out bids to all the hotels. Working through the city we may be able to get some of the Advertising Grant funds. The National Club will loan us up to \$4000.00 if needed. These funds must be paid back within 90 days of the close of the event.

Allen began to discuss some of the logistics that include

possible raffle items, venues and bus trips. The Dates are December 3-7, 2025.

Three members voiced concerns. Some concerns were that they were not asked about it. Where money was going to come from? And that the club would be embarrassed. After each person got their chance to voice their opinion it was decided that before the agreement with National was signed that an email vote would go out to the active members.

Nancy Pampel talked about the Christmas lunch on Dec 7 at Lillian's. 1-3pm is our window for the event. Gift exchange would happen with dinner at 1:30. Club member cost is \$30 each with four choices. The event would end with the Election of Officers. Charlotte made a motion to accept the event as Nancy described it;

Kathy McNamara 2nd; All voted yes; Passed. Allen noted

that an RSVP with your dinner choice will be in the Newsletter in October with an email follow-up.

Martha brought some show and tell items. She offered 3 books about judging and one book about fashion. All books are MAFCA standard. She also presented Allen Braddy with a dammit doll. Martha also had a vest for patches, hat with pins and a quilt with Walt's t-shirts.

Ray said that all events must have a vote for national insurance to cover the event. Allen will look into this to see if this is true.

Allen asked about name tags and pointed out Martha's. Martha said that you can add positions that a person holds under it. Martha was going to check into name tags. To replace the lanyard type.

Martha made a motion to adjourn the meeting.

Respectfully Submitted
Charlotte Dahlenburg



Martha Fuller presented Allen Braddy with a damit doll.



Martha Fuller brought Walt's Model A quilt made from event t-shirts



THE TRAVELER

Monthly publication of the Gulf Coast Model 'A' Club - Southern Alabama to the Florida Panhandle



Club Happenings

The Blue Goose

Al Manning took the Blue Goose to the 2nd Saturday Steak 'N Shake Cruise in on Schillinger Road hosted by the Pharoah's Car Club of Alabama. Everyone enjoys seeing the Blue Goose no matter where it goes.



Ron and Bunny braved the heat last week and took "Henrietta" for a spin. We have to burn the gas in the tank down low enough to install a repair kit in the gas gauge.

The Model A Ford Club of America MAFCA

Serving Model A Ford owners since 1955



Our award winning magazine "The Restorer"

MAFCA is dedicated to the restoration, preservation and enjoyment of the Ford Model A and AA cars and trucks, as manufactured from 1928 through 1931. We are an active, family-friendly organization whose members share a passion for these historic vehicles, plus other aspects of life in that era, such as fashions.

MAFCA is a not-for-profit corporation with members and local affiliated chapters all over the globe. This makes us the largest car club in the world dedicated to one make of automobile. We hope you enjoy looking through our site, and we invite you to join us!

Membership in Model A Ford Club of America is encouraged. MAFCA Dues are \$50.00 and should be mailed to: MAFCA Headquarters, 250 South Cypress, LaHabra, CA 90631-5586 For more info visit: <https://www.mafca.com/>



Let the **LADIES** do it!

FROM THE KITCHEN



Old Fashion Cole Slaw

For 2 adjust as needed
Place all ingredients in a bowl that be shaken (Tuperware)

- 1/4 tsp salt
- Dash black pepper
- 1/4 tsp dry mustard
- 2 tbs green pepper , chopped
- 1 1/4 tbs green olive, chopped
- 1/2 tsp onion, chopped
- 1/2 tbs olive oil
- 2 tbs vinegar
- 2 cups cabbage, course chopped

Combine all ingredients and chili well/ Best if used the same day as made

- Terry and Nancy Pampel

Family Life during the Model A Era

The Silent Generation

- Birth Years: 1928 to 1945
- Major Events in Their Lives:
- The fall of the Nazis
- The rise of the nuclear bomb
- Communism as an enemy

The McCarthy Era The Cold War

Parenting Style:

The Silent Generation was known for working within the system rather than fighting the system. They parented quietly and without doing anything that called attention to them. They kept their heads down and did what they had to do.

They are known for becoming parents at the youngest ages of all of the generations so they married and gave birth as young adults. They were also the generation that popularized divorce, and there were many divorces seen in this generation. Many of the Silents raised their children to be “seen and not heard.”



Who is Betty Crocker?

In 1921, Gold Medal Flour featured a puzzle advertisement on the back

1921 SEWING

of The Saturday Evening Post inviting consumers to send in the completed puzzle to receive a free Gold Medal Flour pincushion in return. The Advertising Department decided they needed a female persona to respond to the questions.

And that is how Betty Crocker was born.

But Washburn-Crosby, our predecessor company in Minneapolis, Minnesota, didn't just receive the completed puzzles; they were flooded with thousands of baking questions from consumers. Ruth Hayes Carpenter was hired in 1921 to create the Home Service Department for Gold Medal Flour. Above you will find the first representatives of Betty Crocker. Ruth was not a home economist, she had administrative experience and hired a team of 25 young home economists to build out the team.

The first task of these women was to host cooking schools across the U.S. They traveled across the country sharing recipes, cooking tips and promoting the quality of Gold Medal Flour.



Entertainment

Email to
Joe Allen Braddy
alnbraddy
@yahoo.com

Submission
date is the
20th of each
month

Car Shows, Events, Cruise Ins & More

Model A Facebook:

Private, by invitation only, Facebook group, "Todays Model A." This is for members-only to communicate within the group, ask questions, make suggestions or complain about how annoying your event coordinator is. So if you're interested in joining the group, Please contact Scott.

Club Activities:

September

7 8:30 am

Pensacola Breakfast. Golden Corral 2260 Langley Ave.

21 11am

Monthly Club Meeting/Lunch Buffet at Magnolia Blossom Cafe 22667 AL 59 Robertsdale

Model A Activities:

September 14 - Worldwide International Model A Ford Day

Dec 11-14 National Awards Banquet Salt Lake City, Utah

Local and Regional, Activities:

August

31 Owa Labor Day Car Show, 1501 S. OWA Blvd. Foley, AL 8am-4pm. All are Welcome Open Car show.

31 Mary Esther Mall Car Show, 300 Mary Ester Blvd, Mary Ester FL. 10-2pm

September

1 (Sunday) Labor Day Showdown, The Grounds, 1035 Cody Rd. N., Mobile, AL.

7 Dauphin Island Car and Craft Show 9-3pm

7 Rolling by the Bay Car Show & Music Festival 301 West Main Street, Pensacola, FL www.rollingbythebay.com

14-15 6th Sparks in the Park Car, Truck & Bike Show, Mullet Festival Grounds, Hwy 85 & W. College Blvd., Niceville, FL., 8-3pm

14 3rd Veterans Helping Veterans Car Show & Jeep Bash on the Bay, Battleship Memorial Park, 2703 Battleship Pkwy, Mobile, AL. 7-2pm.

21 Gweeto's Fight to kick Cancer Benefit Mobile Dragway, 7800Park Blvd. Irvington AL 4pm

28 Anything Auto Swap Meet/Grand Bay Country Cruisers Car Show, Abba Shrine Center, 7701 Hitt Rd., Mobile, AL., 7- 3pm.

28-29 3rd Fords and Friends in the Fall, Pensacola Fairgrounds, 6655 Mobile Hwy, Pensacola, FL



Help Wanted

**Car Shows? Car Events?
Email to Allen Braddy
alnbraddy@yahoo.com**

Quiz Time!

Read the newsletter to find the answers to the following questions.

- Where was our meeting held? A. Foley B. Pensacola C. Roberstdale D. California
- How many years did Charlie Chpins Carrere span? A. 19 years b25 years C. 17 years D. 50 years
- When is Model A Day? A. November 12 B. September 14 C. Christmas Eve D. April 1
- Who sent in a recipe A. Wonda B. Judy C. Nancy D. Ellen
- Why did Ron and Bunny take Henrietta for a spin?
a. because it was hot b. for fun
c. to burn gas d. because they could

1 C, 2 D, 3 B, 4 C, 5 C

2024 Florida Model A Day Event October 4-6

In Florida

Admission is free with a Model A or Model T including passengers.

Friday starts with music and Hors d'Oeuvres

Saturday includes classes, history, trivia, lunch. and evening wrap of with 50/50





MODEL A TOURING CLUB OF NORTH ALABAMA 5TH ANNUAL FALL TOUR

2024

Check In, Thursday October 31st

Tour Dates, Nov, 1st & 2nd

Directions To Motel, Hwy 59 To Exit 181, Hwy 77 South,

Coming from The South, Right On Hwy 77 S, .03 Miles To Motel

Coming from The North, Right On Hwy 77 S, .07 Miles To Motel

Quality Inn

1612 W Grand Ave (Hwy 77)

Gadsden, Al. 35904

When Booking Reservation, Use Group Name & Account No.

Group Name

Model A Touring Club

Group Account No. 4879493

Ph- 256-442-7913

\$65 Per Night + Tax

Check In Thursday Oct.31st

Plenty Of Trailer Parking On Premise

Thursday Evening We Have A Banquet Room Reserved At The Western Sizzlin, Not Far From The Motel, From The Motel Turn Right (South) On Hwy 77S, Cross Steele Station Rd. 209 N Grand Ave/Hwy 77, It's On The Left. We Will Meet At 6:00.

Friday Evening You Will Be On Your Own, You Will Have Many Restaurants To Choose From.

Saturday Evening Will Be Our Farewell Dinner At The Rainbow City Community Center, 3702 Rainbow Dr., Rainbow City,35906. This Is Behind The Fire Dept. & Library.

Complete Info will Be In Tour Packet To Be Picked Up When Checking In



THE TRAVELER

Monthly publication of the Gulf Coast Model 'A' Club - Southern Alabama to the Florida Panhandle





MODEL A TOURING CLUB OF NORTH ALABAMA 5TH ANNUAL FALL TOUR

Having Based our Tour out of Ft. Payne 4 years, it's time to move on to new territory. We are Basing this years Tour out of the Gadsden area, There is plenty of new area to explore, lot's of good eating places and a great Motel with Trailer parking. The last couple years we have been Blessed with perfect weather and beautiful Fall Colors, hopefully this year will be a repeat

Name, Print _____

Additional Attending, Print _____

Address _____

City _____ State _____ Zip _____

Phone _____ Email _____

Touring Car _____ Tag No. _____

Insurance Company _____

Registration Fee \$15.00 _____ Farewell Dinner \$15.00 Per Person _____ Total _____

Make Check Payable To:
MATCNA, 665 Randolph Rd., Hokes Bluff, Al. 35903

MATCNA SIGN UP & RENEWAL RATE \$15.00

For Those who have not been to one of our Fall Tours, we do tour the Mt. Ranges in the area, lot's of up and down Curvy Model A roads, a car in good mechanical condition with good Breaks will be required

Additional Informational will be provided in the Touring Packet
For more Info, feel free to call me or John (JL) Armstrong anytime,

Dan Nelson 256-490-4360

JL Armstrong 256-390-1231



THE TRAVELER

Monthly publication of the Gulf Coast Model 'A' Club - Southern Alabama to the Florida Panhandle



Tech Tips

The Torque Tube!

By Tom Endy

To replace the grease seal and the roller bearing sleeve in the front end of the torque tube it is necessary to first remove the old ones. This is sometimes a perplexing task for a person new to the Model A hobby. In order to remove either one they both have to come out together.

A technique that has been around for many years is to use a 1 1/16" socket over the end of the drive shaft spline. I have used this procedure for a number of years with complete success. The socket will push against the seal and the seal will push against the sleeve. Both will be pushed out the end of the torque tube together.

My method was to stand a drive shaft vertically on a block of wood on the shop floor with the threaded end resting on the wood. Place the socket on the spline end and slide the torque tube down over it and bounce it several times. It is best to hold a rag over the top to prevent the sleeve, the seal, the socket, and a world of grease and crud from flying all over the shop.

Recently I was working on a late 31 rear end and as I attempted to remove the torque

tube sleeve and seal the socket became jammed in the neck of the torque tube. The late 31 torque tubes are apparently narrower at the neck. I had to use a long punch from the top of the torque tube to knock the socket loose. The socket is a garden-variety Craftsman socket that I have been using for many years.

To solve my immediate problem I used my one-inch socket. I stood the torque tube on its head and dropped the socket down onto the seal and used the drive shaft to knock everything loose.

As a result of this encounter I decided that a proper tool was in order. I purchased a grease seal insertion tool from Bratton's (part number 6270, page 158, 2006 catalog, \$6.60). I had the outside diameter of the collar machined down to 1.335", which is the outside diameter of my garden-variety Craftsman one-inch Socket. I screwed the modified tool onto a five-foot length of 1/2" water pipe.

My new technique is to put a piece of newspaper on the shop floor. Stand the torque tube on its head on the newspaper. Slide the tool down through the torque tube and fish it around until the end of the tool goes into the seal. Tap it with a hammer a few times and the whole greasy mess will exit the



The tool in the top of the photo is a grease seal insertion tool with the flange turned down to 1.335" (arrow indicates flange) and it is attached to a five-foot length of 1/2" water pipe. The tool in the bottom of the photo is a standard grease seal insertion tool attached to a short length of pipe used to install a grease seal into a torque tube.

torque tube and pile up on the newspaper.

When installing the new grease seal and bearing sleeve be sure and install the seal first. If you install the sleeve first you will not be able to get the seal in as the sleeve will be in the way and you will have to destroy the sleeve in order to remove it. ☺

Era Fashions



\$1 a year

The Pathfinder

TITLE REG. U. S. PAT. OFFICE

Truth is Stranger Than Fiction—So We Carry No Fiction

Sleeves That Are “Sleeves”

*Submitted by Perry Jones,
Piney Wood Ford Model A Club*

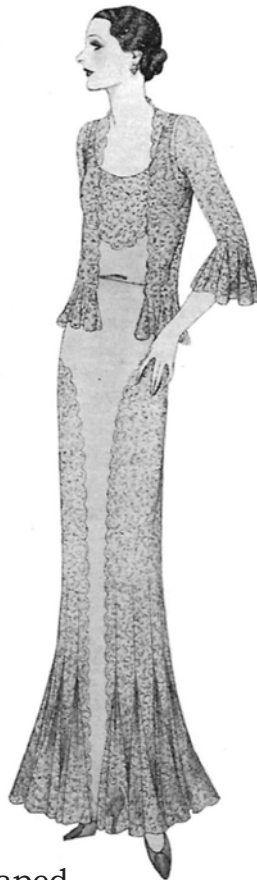
In the Model A Era Fashion hobby, a lot of time is spent antiquing, which I find to be the best part of the hobby. While on the hunt, I am looking for fashion items, such as major garments, headgear, accessories, etc. I am also on the lookout for printed material consisting of magazines, catalogues and newspapers. On one such outing I found an obscure, 39 page weekly magazine called The Pathfinder. It is printed on what appears to be newsprint paper but is bound like a magazine. The contents are varied and ranges from US Politics, World News to how best to poach an egg.

The following article appeared in the April 5, 1930 edition of The Pathfinder. The article, by an anonymous

author and excerpted below, discussed the sleeve transition from the Winter of 1929 into the Spring of 1930.

All sleeve examples shown below are from the 2015 Edition of The MAFCA Fashion Guidelines.

Until this past winter sleeves were merely that and a little less. That is, you either had long sleeves or none.



Bell Shaped



Cape





Scarf

They [sleeves] were usually straight and fitted snug to the wrist and were made of the same material as the dress with little or no embellishment. Not so the sleeves of spring. There is greater variety in shape and length than we've had in any recent time.

The short sleeve above the elbow will no doubt be the most popular for cotton and crepe dresses for summer, but it is being used now in jersey and other woolen dresses, for satin and crepe and sheer cotton blouses. Then the three-quarter sleeve ending in a bell shaped "flounce" is shown on afternoon dresses and suits of silk that have little boleros or straight jackets. They are also used as lace dinner dresses with removable jackets.

Some sleeves are just made of a circular piece of material set in the armhole forming a cape effect while others are formed by a scarf sewed around the neck and tied on one shoulder, leaving one arm bare,

There seems to be no set rule for sleeves except that good sense tells us it isn't wise to have street dresses sleeveless



Puffed

(except for summer resorts and country life) and that for evening the very short sleeve, puffed or straight or no sleeve at all, is best; that for boleros of silk or lace the three-quarter sleeve is smart; that the long straight sleeve is worn on blouses and many print dresses and is more flattering to those who are not slim.

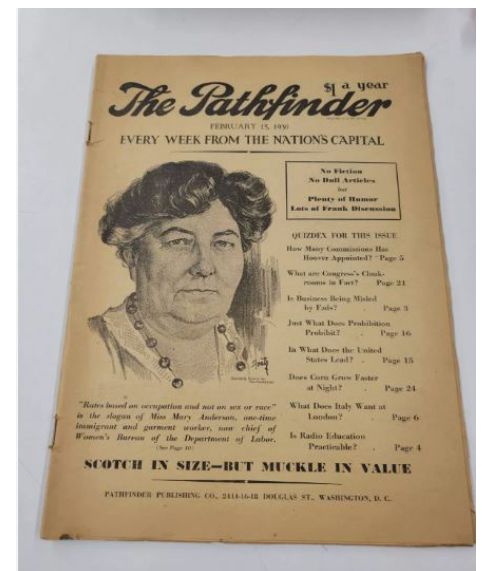


Short Sport

And that for sport clothes, either cotton or wool, the very short straight sleeve is decidedly smart, having a slight "edge" on the sleeveless frocks of last season.

References:

1. The Pathfinder April 5, 1930; Pathfinder Publishing Co., 2414-16-18 Douglas St., Washington, D.C.
2. All images are from the MAFCA Fashion Guidelines 2015 Edition.



Email
Submissions to
realracegrill1
@gmail.com

Classifieds

Submission
date is the
20th of each
month

Have parts or a car you want to sell? Need a certain part for your restoration? Submit your ad and we'll run it in the newsletter for approximately 3 months. Email your ad with photos to Charlotte at realracegrill1@gmail.com



Early 28 Sport Coupe left hand brake red steering wheel, owned since 1964. It was active in GCMAC for many years when my parents were alive. A mature restoration 20+ years

ago by club members. Good engine. Sound mechanically. Needs exhaust. 12 volt conversion. Drives well. Needs paint. Interior good. Extra parts go with it. Video of car running and driving. Looks better in pics than in person. Needs a good new home. if interested call 251-979-1329

leave message and I'll return call. Come take a look. Asking \$7500.00
Lee Stepney
Magnolia Springs
251-979-1329



For sale Tune Master older Gauge set 7 meters
\$150 • Larry Nelson • 251323-8050





Era Photos



Left: Herbert Hoover, Commerce Secretary, who was nominated for President at the Republican National convention, is shown with Mrs. Hoover, Herbert, Jr. and his wife at their home where they were congratulated by hundreds of friends today. 6-15-28

Below: Herbert Hoover, Secretary of Commerce, recently nominated for President at the Republican National Convention, is shown leaving his home at Washington D.C. with Mrs. Hoover and their pet police dog "Tut." 6-16-28

- Photographer Bill ShROUT

Herbert Hoover, Republican Presidential Nominee



Left: Herbert Hoover, Republican Presidential Nominee, and Mrs. Hoover are shown on the steps of their home at Washington, D.C, where they posed for cameramen for the first time since the nomination at Kansas City. Both Secretary Hoover and his wife were busy reading telegrams of congratulation from friends and each had a sheaf in their hands. 6-15-28





Charlie Chaplin Silent to Talkie

Reprinted from www.pbs.org

With a film career spanning over fifty years, Charles Chaplin was a brilliant and innovative artist and one of the brightest and most powerful stars in Hollywood history. Famous for his slapstick comedy, his ingenuity, and his "Little Tramp" character, Chaplin made nearly 90 films and became a firmly established film icon.

Acting to Survive

Charles Spencer Chaplin was born in 1889 in London, England. Like his future business partners Mary Pickford and Douglas

fairbanks, Chaplin, orphaned at 10, turned to acting for survival. He joined a children's performance group, "The Eight Lancashire Lads," and was soon recognized for his exceptional tap dancing ability.

Keystone Performer

Chaplin's early successes on stage as a comedian in vaudeville led to U.S. tours beginning in 1912. His growing popularity landed him a film contract in 1913 with Mack Sennett, director of Keystone Studios. Chaplin found popularity with American audiences and commanded a salary of \$150 a week -- over \$2000 in today's dollars.



sophisticated slapstick, and tender pathos to win the hearts of his audience.

Exploding Salary

One year and 35 films later, Chaplin left Keystone. A contract with Essanay Film Manufacturing Company followed in 1915, with a salary of \$1000 a week. The Tramp was among 15 films Chaplin made while at Essanay before signing with Mutual Film Corporation for \$10,000 a week plus a \$150,000 signing bonus.



War Supporter

At Mutual, Chaplin starred in 12 comedies, including Easy Street and The Immigrant, both in 1916. These films would become regarded as some of his most brilliant work. When he completed his contract with Mutual, Chaplin set out to open his own studio, to have

more control over his films. In 1918 he released A Dog's Life in a distribution agreement with First National. That same year, Chaplin helped the government sell Liberty Bonds for World War I. He toured the country with Mary Pickford and his closest friend, Douglas Fairbanks, selling the bonds and raising public support for U.S. involvement in the war.

Rivals

Chaplin proved to be quite a competitor for Pickford, both professionally and personally. Each created a character that audiences loved and clamored to see. They commanded astronomical salaries. But Chaplin's popularity seemed to endure; possibly, the Little Tramp aged more easily than Little Mary. Off screen, Chaplin and Pickford vied for the attention of Douglas Fairbanks. Chaplin and Fairbanks were the best of friends, pairing their comedic styles at parties and clowning at every opportunity. Pickford was not amused by Chaplin stealing her husband's attention, and grew tired of their endless pranks and physical gags.



The Birth of United Artists

Nonetheless, Pickford joined

her rival when the biggest stars in Hollywood combined forces to form United Artists. In 1919, Chaplin, Pickford, Fairbanks, and producer D.W. Griffith joined together to produce, distribute, and exhibit their own films. The most influential names in Hollywood challenged the way the industry did business, claiming more of the profits for themselves.



Chaplin's U.A. Films

Chaplin could not immediately begin producing for United Artists because of ongoing commitments to First National. In 1921 he acted in eight reels for the company, including The Kid and The Idle Class. At the end of his contract, and after a long trek through Europe, Chaplin returned to California to begin making films for United Artists. Some of Chaplin's most widely acclaimed features were made in this period, including Gold Rush (1925), Modern Times (1936), and The Great Dictator (1940).





Barred from the U.S.

Throughout his many years in the United States, Chaplin retained his British citizenship. He was known for left-wing political views. Returning from London after the premiere of his film *Limelight* in 1952,

Chaplin was barred from re-entry to the U.S. because of his politics and his refusal to take U.S. citizenship.

Honors

In 1953 Chaplin moved to Switzerland with his fourth wife, Oona O'Neill. He made

two more movies and wrote several books, including two autobiographies. He did not return to the U.S. until 1972, when the Academy of Motion Pictures and Sciences honored Chaplin with a special Oscar for his career achievements. In 1975, he was knighted by Queen Elizabeth II. He died December 25, 1977 at the age of 88.

World's Greatest Actor

Chaplin was a man of many talents, but he is most renowned for his contributions to the art of film. He was one of the first comedians to finance and produce all of his pictures (with the one exception being *A Countess from Hong Kong* (1966)) - and to write, cast, act, direct, edit, and compose for them as well. In a 1995 survey of film critics worldwide, Chaplin was voted the greatest actor in film history. He was and will always be an extraordinary cinema legend.



ABOUT THE GULF COAST MODEL 'A' CLUB

The *Traveler* newsletter is published for the membership and friends of the Gulf Coast Model 'A' Club. Outings are held monthly at various locations and times. Views expressed in the *Traveler* are not necessarily those of the Club Officers or MAFCA. Club membership is \$25.00 per year and can be mailed to Becky Baisden at:

GCMAC,
PO Box 812
Cantonment, FL 32533
Club dues are \$25 per year for individuals or families. We currently have a membership of 40+ families. We believe in doing maintenance on the cars, educating ourselves on the Model 'A', fellowship with other members, showing the cars, driving the cars locally and

on tours and having a great time seeing and driving Model 'A' Fords. We have fun and would welcome you as a member whether you own a Model A or not. Come join with us in a wonderful hobby that is historical and worthwhile. You will meet friendly people who are in love with the Model 'A' and love to drive, show and talk about these interesting cars.



THE TRAVELER

Monthly publication of the Gulf Coast Model 'A' Club - Southern Alabama to the Florida Panhandle

